

# ACCESSORIES & SPARES



Uni-Blinds®

Innovation comes built-in

# Contents

B Side System	Page 3
C System	Page 4
MB System - Power Supplies	Page 8
MB System - Controls (Standard)	Page 10
MB System - Controls (RF)	Page 13
MB System - Cables and Wires	Page 14
MB System - Make and Break Contactors	Page 15
MB System - Accessories	Page 16
P System	Page 18
S System	Page 19
W System	Page 20





## Accessories and Spares – B Side System

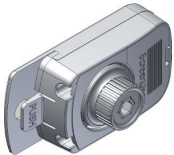


### Round knob

SL2248S102 - white

SL2248S155 - light grey

SL2248B160 - black

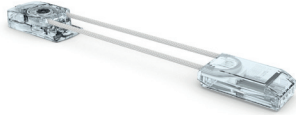


### Slim knob

SL2110S102 - white

SL2110S155 - light grey

## Accessories and Spares – C System



### CE

Kit consisting of external magnetic device SL2240, cord loop SL1011 and cord tensioner SL1899, available in 5 colours.



### Cord loop

SL1011300 - white

SL1011401 - cream

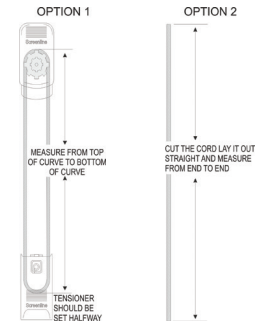
SL1011 - beige

SL1011422 - grey

SL1011 - black

Option 1 & 2 - As measuring guide

Option 3 - To suit glass height



### SL2239

Double-sided adhesive tape for 31 mm external magnetic device



### SL1897

Double-sided adhesive tape for cord tensioner

## Accessories and Spares – C System



### SL1898 (SL16C)

SL1898S000 - transparent  
SL1898S155 - light grey

SL1898S149 - cream

---



### SL2240

31 mm diam. external magnetic device

SL2240S000 - transparent  
SL2240S149 - cream  
SL2240B160 - black

SL2240S102 - white  
SL2240S155 - light grey

---



### Cord tensioner

SL1899S000 - transparent  
SL1899S149 - cream  
SL1899B160 - black

SL1899S102 - white  
SL1899S155 - light grey

---



### Double-sided adhesive tape for wand control device

SL1017 - transparent

## Accessories and Spares – C System



**Wand external magnetic device**  
SL1032S000 - transparent

---



**SL1033**  
Transparent wand

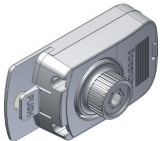
---



**Round knob**  
SL2248S102 - white  
SL2248B160 - black

SL2248S155 - light grey

---



**SL2110 Crank control**  
SL2110S102 - white

SL2110S155 - light grey

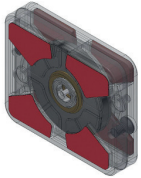
## Accessories and Spares – C System



### External motor (after sales)

SL2190S102 - white    SL2190S155 - light grey  
SL2190B160 - black

---



### Transmission device for triple glazing

SL2364 - 10 mm    SL2365 - 12 mm    SL2366 - 14 mm  
SL2367 - 16 mm    SL2387 - 20 mm



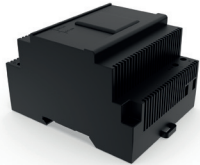
## Accessories and Spares – MB System – Power Supplies



### SL2711

Switching Power Supply 24V DC 1.3 A for max. 2 blinds DIN rail mounting  
diam.: 2 modules 35x90x54 mm (WxHxD)

---



### SL2712

Switching Power Supply 24V DC 2.5 A for max. 4 blinds DIN rail mounting  
diam.: 3 modules 52x90x58 mm (WxHxD)

---



### SL2713

Switching Power Supply 24V DC 4.2 A for max. 8 blinds DIN rail mounting  
diam.: 4 modules 70x90x54 mm (WxHxD)

---



### SL1811

Power Supply for configuration, test and assembly of M blinds  
With control-LED for main voltage and communication

## Accessories and Spares – MB System – Power Supplies



### **PWCB1-5**

Pre-wired control box for 1-5 blinds - 215x210x105 mm

---



### **PWCB1-8**

Pre-wired control box for 1-8 blinds - 215x210x105 mm

## Accessories and Spares – MB System – Controls (Standard)



### ST2121

Control Module 1 group of blinds (PC configuration)  
Control relay for control of up to 4 blinds in one group  
Remote control input for superordinate group control (Potential separated)  
Individually configurable via Configuration Utility (PC)  
DIN rail mounting  
diam.: 2 modules 35x91x62 mm (WxHxD)



### ST2124

Control Module 4 groups of blinds (PC configuration)  
Control relay for control of up to 16 blinds in 4 groups (4 x 4 blinds)  
Remote control input for superordinate group control (Potential separated)  
Individually configurable via Configuration Utility (PC)  
DIN rail mounting  
diam.: 4 modules 71x91x62 mm (WxHxD)

## Accessories and Spares – MB System – Controls (Standard)



### ST2128

Current Amplifier

Expansion of a power output control for blinds up to 16 blinds in one group

Only to use with a control module and power supply

DIN rail mounting

diam.: 2 Modules 35x91x62 mm (WxHxD)

---



### SL1807

Control unit 4 blinds

Control relay for control of up to 4 blinds in one group

Remote control input for superordinate group control

diam.: 40x40x20 mm (WxHxD)

---



### SL1807A

Control unit 4 blinds for tilt-only operation

Control relay for control of up to 4 blinds in one group

Remote control input for superordinate group control

diam.: 40x40x20 mm (WxHxD)

## Accessories and Spares – MB System – Controls (Standard)



**SFP**  
Surface mounted switch plate

---



**RSB**  
Surface mounted rocker switch box

---



**ST5311**  
Rocker Switch  
Blind group control button as built-in version (rocker switch)  
Only available in black. diam.: 25x31.5x29.1 mm (WxHxD)

---



**ST5255**  
Key operated switch - stainless steel

---



**HCP Switch**  
Antiligature Push Switch - stainless steel

## Accessories and Spares – MB System – Controls (RF)



### SL1963

Control unit with integrated radio receiver for one blind  
Quantity of blinds can be increased by expansion  
with control unit SL1807 up to 4 blinds at a time  
diam.: 48x43x21 mm (WxHxD)

---



### SL2392S159

Radio remote control  
Portable transmitter with LCD display up to 99 channels  
Colour: anthracite grey  
diam.: 40x128x11 mm (WxHxD)

---



### CR2430

Replacement remote control battery

## Accessories and Spares – MB System – Cables and Wires



### SL2361

Cable for external connection of M motor

SL23611000 - L 1 mt (standard)

SL23613000 - L 3 mt

SL236110000 - L 10 mt

SL23612000 - L 2 mt

SL23615000 - L 5 mt

SL236115000 - L 15 mt



### W2

T Spec 2 wire

100 mt coils

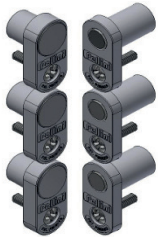


### ST8101

3 wire

100 mt coils

## Accessories and Spares – MB System – Make and Break Contactors



### SL2444

Set of 3 pieces of one-pole contacts  
One-pole magnetic contacts for transmitting electrical connection and data communication lines on doors and windows in 3-wire motors. The package contains three couples of contacts  
Available in black (SL2444B160) and light grey (SL2444S155)

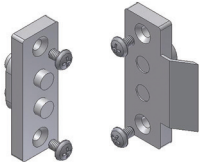
---



### ST9121b

Tappet Contactor  
Only available in black

---



### SL1169

Omec Contactor  
Only available in black



## Accessories and Spares – MB System – Accessories



### ST5311

Rocker Switch

Blind group control button as built-in version (rocker switch)

Only available in black. diam.: 25x31.5x29.1 mm (WxHxD)

---



### ST9304

Wall Mounted Box 4 modules

Wall mounted Box for power suppliers or control units

diam.: 110x180x82 mm (WxHxD)

## Accessories and Spares – MB System – Accessories



### ST9306

Wall Mounted Box 6 modules

Wall mounted box for power suppliers and control units  
diam.: 146x180x82 mm (WxHxD)

---



### ST9308

Wall Mounted Box 8 modules

Wall mounted box for power suppliers and control units  
diam.: 182x180x82 mm (WxHxD)

---



### ST9310

Wall Mounted Box 10 modules

Wall mounted box for power suppliers and control units  
diam.: 218x180x82 mm (WxHxD)

---



### B06522

Enclosure – 215x210x105 mm

## Accessories and Spares – P System



### Assembled flexible cable

SL1136 L=500 mm  
SL1137 L=1000 mm  
SL1138 L=1500 mm  
SL1139 L=2000 mm  
SL1867 L=2500 mm  
SL1551 L=3000 mm



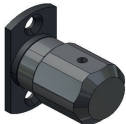
### Antiligature knob

SL2161S102 white plastic  
SL2161S155 light grey plastic  
SL2161B160 black plastic



### SL2159

Antiligature knob brass/stainless steel



### SL1024

Standard knob



### SL2569

'P' knob double transmission kit

## Accessories and Spares – S System



### SL2745

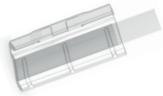
Sliding external magnetic device (Pleated)

SL2745S102 - white

SL2745S155 - light grey

SL2745B160 - black

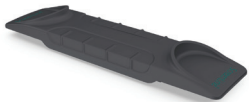
---



### SL2526

Couple of transparent end stops for external slider

---



### External slider (Venetian)

SL2486S102 - white

SL2486S149 - beige

SL2486S157 - light grey

SL2486S159 - anthracite grey

---



### SL2469

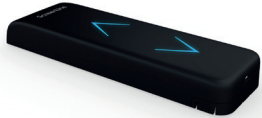
Transparent adhesive guide

## Accessories and Spares – W System



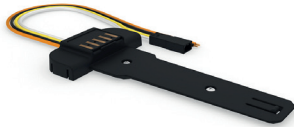
**SL1084B160**  
Solar panel - black

---



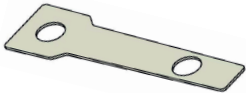
**SL2776**  
W Smart Battery Pack  
SL2776S102 - white  
SL2776S157 - silver  
SL2776S159 - anthracite grey  
SL2776B160 - black

---



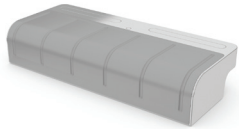
**SL2775**  
Battery Support  
SL2775S102 - white  
SL2775S157 - silver  
SL2775S159 - anthracite grey  
SL2775B160 - black

---



**SL2767**  
Adhesive Pad

## Accessories and Spares – W System



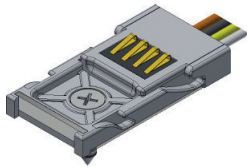
### Battery module with radio receiver

SL2380S102R - white

SL2380S155R - light grey

SL2380S159R - anthracite grey

---



### SL2379

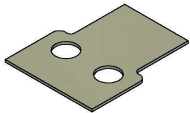
Battery Support

SL2379S102 - white

SL2379S155 - light grey

SL2379S159 - anthracite grey

---



### SL2370

Adhesive pad

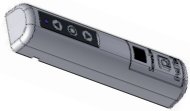
---



### Battery charger

SL2405UK with British plug

## Accessories and Spares – W System



**SL1083**  
Touch Battery Module

---



**SL1081**  
Touch Battery Charger

---



**SL2392S159W**  
Radio remote control  
Portable radio transmitter with LCD display  
for up to 99 channels  
Colour: anthracite grey  
diam.: 40x128x11 mm (WxHxD)

---



**CR2430**  
Replacement remote control battery

Produced by Claremon | [claremon.co.uk](http://claremon.co.uk)

Uni-Blinds<sup>®</sup>

Innovation comes built-in